



SANJEEVAN

ENGINEERING & TECHNOLOGY INSTITUTE, PANHALA

(Degree & Diploma)

EN 6315



Approved by AICTE, New Delhi, Recognized by DTE,
Affiliated to DBATU, Lonere & MSBTE, Maharashtra.

ADMISSIONS OPEN

Admission Facilitation Center (FC)/
Scrutiny Center (SC) Facility Available

VISION

- ▶ SETI to Educate to Excel in Social Transformation.

MISSION

- ▶ To inculcate academic excellence in pursuit of technical education & to strive hard for good academic Result & Placements.
- ▶ To attract, nurture and to retain the best faculty and technical Manpower.
- ▶ To develop the holistic personality of students to be a responsible citizen with ethical values and lifelong learning.
- ▶ To Promote industry institute interaction for employability and entrepreneurship.

SANJEEVAN GROUP OF SCHOOLS

Somwar Peth, Panhala, Dist. Kolhapur-416201 (Maharashtra-India)



www.seti.edu.in



admission@seti.edu.in



www.sanjeevan.edu.in



9158893049, 9146999500, 9765922586, 9673748282





*The best way to predict
your future is to create it...*

Shri. P. R. Bhosale
Hon'ble Chairman



*Develop a passion for learning.
If you do, you will never cease to grow...*

Shri. N. R. Bhosale
Hon'ble Jt. Secretary

DR. BABASAHEB AMBEDKAR TECHNOLOGICAL UNIVERSITY, LONERE.



- राज्यस्तरीय तंत्रशास्त्र विद्यापीठाकडून (Autonomous) महाविद्यालयाप्रमाणे B. Tech/ M. Tech पदवी.
- राज्यपातळीवर एकच उच्च दर्जाचा अभ्यासक्रम ● प्रत्यक्ष प्रात्यक्षिकावर आधारित गुणवत्तेची हमी.
- आंतरराष्ट्रीय विद्यापीठाशी सामंज्यस करारामुळे ऑनलाईन तंत्रज्ञानाच्या आधारे उच्च तंत्रज्ञानाचा सखोल अभ्यास
- अनुत्तीर्ण विद्यार्थ्यांचे त्वरीत फेरपरीक्षेमुळे वर्ष वाया जाण्याची भीती नाही.
- द्वितीय वर्षापासून मुक्त ऐच्छिक विषयाची संधी. ● नामांकित शासकिय संस्था व उद्योगामध्ये नोकरीची संधी.
- महाविद्यालय व विद्यार्थी हितासाठी विद्यापीठ विभागीय कार्यालयांची सोय.

SALIENT FEATURES



- Tradition of bagging MSBTE & University Ranks.
- Special Scholarship at Institute level for outstanding students.
- Experienced, qualified and dedicated staff.
- Govt. Scholarship / Freeship for all eligible students.
- Training cell for competitive examination.
- Excellent placement track records.

First Year - Under Graduate Courses (B. Tech)

Courses Name	Intake	Course Code
Civil Engineering	60	631519110
Computer Science & Engineering	120	631524210
Electrical Engineering	60	631529310
Mechanical Engineering	60	631561210
* Electronics & Computer Engg.	60	

* Proposed from AY 2023-24

Diploma Engineering

Courses Name	Intake	Course Code
Electrical Engineering	60	631529310
Mechanical Engineering	60	631561210
* Computer Science & Engg.	60	
* Civil Engineering	60	

* Proposed from AY 2023-24

COURSES OFFERED



OUR ALUMNI - OUR PRIDE

We have a lot, few of them are...



PRATIK MOHITE
Asst. Inspector,
Dy. RTO office, Baramati



NAVANATH PANDHARE
Police Sub - Inspector
Maharashtra Police.



AMIT KAMAT
Marine Engineer
Central Govt. of India.



AKASHAY PATIL
RTO - Asst. Motor
Vehicle Inspector



PRIYANKA SANGAONKAR
RTO - Asst. Motor
Vehicle Inspector



HARSHAD SIDAWADKAR
Sr. Product Design Engg., Emerson
Innovation Center Emerson
Automation Solutions, Pune.



TANUJA PAWAR
Software Developer
Sapiens Tech., Bangaluru



AMIT SARVALKAR
Software Developer
CDAC, Pune



VINAYAK KUMBHAR
Facility Engineer
Amazon



RUTURAJ PATOLE
Design Engg., Tox
Pressotechnik India, Pune



BHARAT MALI
Asst. Manager, Maharashtra
Fasteners Pvt. Ltd., Pune.



RUSHIKESH SAJANE
Asst. Engg. MSEDCL



ANIKET MOHITE
Lead Quality Engg.
Persistent Systems Ltd.
Pune.



SWAPNIL PATIL
Asst. Engg.
MSEDCL



SWAPNALI PATIL
Junior Engg.,
Z. P. Kolhapur



SHREYASH PUROHIT
Sr. Dev. Ops. Engg.
Sigmoid Analytics, Bangluru



BHASKAR SABNIS
Sr. Software Engg.
Partide41 India LLP, Pune



Akshay Shinde
Software Engg.
Theta Service Partner, Malaysia



MAITREYEE DESHMUKH
M.S. in Electrical Engg.
& Info. Tech. Berlin-Germany



SWAPNIL DEVAN
Smartcloud Info Services
Pvt. Ltd., Pune



SOURABH UPADHYE
Sr. Software Engg.
Hitachi, Pune



RANVEER KADAM
Planning Engineer
Tech. Service Pvt. Ltd., Mumbai



JUBER BANGI
Purchasing Specialist
Volkswagen, Germany



PRATHAMESH KELKAR
Software Engineer
Honeywell, Pune



KRUSHNATH TIWARI
Data Analyst
Hoonartek Pvt. Ltd., Pune



SAURABH PATIL
Quality Control Inspector
Mazgaon Dockyard, Mumbai



PRATIK BANGADE
Application Devp. Associate
Accenture, Mumbai



ABHISHEK GHORPADE
Jr. Engineer
Pune Municipal, Pune



VIRENDRA MANDLIK
Jr. Engineer
Irrigation Dept, Kolhapur



PRAVIN ROTE
Jr. Engineer
BMC, Mumbai



ROHIT WAICHAL
Asst. Engineer
Town Planning, Aurangabad



AKHILESH SAWANT
HCC, Planning Engineer
Mumbai



ADITYA JADHAV
Product Design Engineer
Cummins, USA



INDRAJEET PARKHE
Sigma Engineers
Manager Export, Pune



SHRADDHA KAMBLE
Regal Rexnord
Jr. Design Engg, Pune



SANYOGITA SURYAWANSHI
System Engineer
Infosys, Pune



RUSHANK SARDESAI
Electro Tech. Officer
Simatech Shipping



AMAN VADGAONKAR
Selected for ETO in
Great Eastern Shipping Management



AKSHAY SHINDE
Theta Service Partner, Malaysia,
Sr. Software Engineer



SUIDHA RAORANE
Cappgemini
Sr. Software engineer, Japan



PALLAVI TELI
Tsys
SDET



SUSHRUT BHOSALE
Bentley Systems
Software Engineer



ABHIJEET BARGALE
Technical Specialist.
Briilio Technologies, Pune.



NIKHIL PATIL
IRIS SOFTWARE
Noida, Team leader



RANJEET KUMBHAR
Expertrons
Sr. QA Engineer, Mumbai



POOJA INGAWALE
Assistant Executive Engineer
PWD, Ratnagiri



MUKESH SWAMI
Project Engineer
Plastic Omnium Pvt Ltd, Pune



YASH PARANJAPE
Site Engineer
Paranjape Const. Ltd, Pune



TUSHAR GOULKAR
Site Engineer
Veena Developers, Mumbai



ASAD NADAF
Owner
AN Construction, Kolhapur



CHANDRADIP PATIL
Owner
Square infra pvt.Ltd, Kolhapur



SAURABH VADER
Analyst
Goldman Sachs, Bangluru



POOJA KUNDALKAR
Associate Engineer
Precision Precast Sol., Pune



PRAVIN DHAMANKAR
Sr. Retail & SME
CBRE Asia Pvt Ltd, Mumbai



NAVANATH VALEKAR
JE Engineer
Indapur Z. P., Pune



SHRADDHA GAVASANE
Energy Consultancy /Audits
Atintop Energy Sol., Solapur



VIJAY CHOUGULE
Asst. Engineer
MSEDCL, DEVGAD



RADHIKA SUTAR
Asst. System Engineer
TCS, Pune



ANIKET SHINDE
Senior Test Engineer
Maveric Systems, Pune



UMESH KHOND
Project Engineer
Wipro, Mumbai



ROHIT JOSHI
Service Manager
IZANAU Electric LLP, Pune



AJINKYA PATIL
Jindal Saw Ltd. Nashik



YOGENDRA BHOSALE
Business Development Sales
Byjus, Pune



NEERAJ LOHAR
Python Developer
Rowlett Solution, Pune



RANJEET KUMBHAR
Sr. QA Engineer
Expertrons, Mumbai



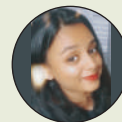
MAHESH PATIL
Asst. Application Developer
Fujitsu India



SUYOG SAWANT
Sr. Software Engineer
Globallogic



MANALI CHAVAN
Assistant Cost Manager
Gleeds consulting Pvt Ltd, Pune



POOJA VARUTE
Fiserv
Software Engineer, Pune



AKSHAY MISAL
Cloud Analyst
Accenture Solutions Pvt Ltd.



SANRAJ TODKAR
Technology analyst
Infosys



GURUPRASAD PALANKAR
Consultant
Cappgemini India pvt ltd, Pune

UNIVERSITY RANK HOLDERS

Vishwajeet Bhosale



1st Rank
Mechanical

Sudhir Avadan



1st Rank
Mechanical

Tejashree Divase



1st Rank
Electrical

Supriya Patil



1st Rank
Electrical

Suyash Bhosale



3rd Rank
Electrical

Vishwajit Rhykar



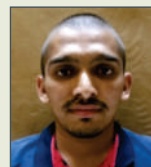
6th Rank
Mechanical

Snehal Patil



8th Rank
Mechanical

Prasad Chavan



9th Rank
Mechanical

Suyog Borge



9th Rank
Electrical

विद्यार्थ्यांना शासनाकडून प्रवर्गनिहाय मिळणाऱ्या सवलतींचा तपशील...

विद्यार्थ्यांने शासनाने ठरवून दिलेल्या पध्दतीनुसार आवश्यक कागदपत्रासह अर्ज भरणे बंधनकारक. शासन नियमाप्रमाणे शैक्षणिक फी माफीसाठी आवश्यक कागदपत्रे.

- विद्यार्थ्यांचा प्रवेश हा Government CAP राउंड मधून झालेला असावा.
- विद्यार्थीकडे महाराष्ट्र शासनाचा रहिवाशी असल्याचा दाखला (Domicile Certificate) आवश्यक.
- कुटूंबाचे एकत्रित वार्षिक उत्पन्न हे ८,००,०००/- (रु. आठ लाख) पेक्षा कमी असावे.

टिप :- एका शैक्षणिक वर्षाकरिता कुटूंबातील फक्त दोनच आपत्य Scholarship चा उपभोग घेऊ शकतात.

SC/ST :- १००% शैक्षणिक व Development शुल्क माफीसाठी

नियम व अटी:-

- या सवलतीसाठी SC/ST Category चे विद्यार्थी Apply करू शकतात.
- कुटूंबाचे एकत्रित वार्षिक उत्पन्नाची मर्यादा नाही.

VJNT / SBC:- १००% शैक्षणिक शुल्क माफीसाठी.

नियम व अटी:-

- या सवलतीसाठी VJNT / SBC Category चे विद्यार्थी Apply करू शकतात.

Other Backward Class (OBC) :- ५०% शैक्षणिक शुल्क माफीसाठी.

नियम व अटी:-

- या सवलतीसाठी OBC Category चे विद्यार्थी Apply करू शकतात.

Rajarshi Chhatrapati Shahu Maharaj Fee Reimbursement Scheme (EBC Scholarship) :- ५०% शैक्षणिक शुल्क माफीसाठी.

नियम व अटी:-

- या सवलतीसाठी General/Open/MKB Category चे विद्यार्थी Apply करू शकतात.

१. डॉ. पंजाबराव देशमुख वसतिगृह निर्वाह भत्ता:- रु. २०,०००/- प्रतिवर्षी

नियम व अटी:-

- या सवलतीसाठी General Category/TFWS (Open Category) चे विद्यार्थी Apply करू शकतात.
- विद्यार्थ्यांच्या पालकांच्या नावे प्राधिकृत अधिकाऱ्याने प्रतिवर्षी दिलेला अल्पभूधारक शेतकरी/ Registered Labourers दाखला आवश्यक.

२. डॉ. पंजाबराव देशमुख वसतिगृह निर्वाह भत्ता:- रु. ८,०००/- प्रतिवर्षी

नियम व अटी:-

- कुटूंबाचे एकत्रित वार्षिक उत्पन्न हे ८,००,०००/- (रु. आठ लाख) पेक्षा कमी असावे.

टिप:- Merit Basis आधारे प्रत्येक जिल्हातून प्रतिवर्षी ५०० विद्यार्थी निवडले जातात.

Central Minority Scholarship(Religion):- रु. २५,०००/- प्रतिवर्षी

State Minority Scholarship (Religion) :- रु. २५,०००/- प्रतिवर्षी

नियम व अटी:-

- इयत्ता १० वी चे शिक्षण महाराष्ट्रातून पूर्ण झालेले असावे.
- प्रवेश Government CAP / Institute Level मधून असावा.

Primary & Secondary Teacher's Children Scholarship

:- रु. ४,०००/- प्रतिवर्षी

नियम व अटी:-

- आई/वडिल हे प्राथमिक/माध्यमिक शिक्षक असल्याचे प्रमाणपत्र (शिक्षण अधिकाऱ्यांच्या सहीचे)

Documents Required for First Year Engg. Admission

Sr. No.	Documents	SC	ST	NT	SBC	OBC	Open
1.	CET/JEE Marks Sheet	✓	✓	✓	✓	✓	✓
2.	12th Marks Sheet	✓	✓	✓	✓	✓	✓
3.	10th Marks Sheet	✓	✓	✓	✓	✓	✓
4.	10th Marks Passing Certificate	✓	✓	✓	✓	✓	✓
5.	Leaving Certificate	✓	✓	✓	✓	✓	✓
6.	Domicile & Nationality	✓	✓	✓	✓	✓	✓
7.	Caste Certificate	✓	✓	✓	✓	✓	N/A
8.	Caste Validity	✓	✓	✓	✓	✓	N/A
9.	Non Creamy Layer	N/A	N/A	✓	✓	✓	N/A
10.	Colour Photo - 2	✓	✓	✓	✓	✓	✓
11.	Aadhar Card Xerox	✓	✓	✓	✓	✓	✓
12.	Nationalized Bank Account	✓	✓	✓	✓	✓	✓

Documents Required for Direct Second Year Degree Engg. Admission

Sr. No.	Documents	SC	ST	NT	SBC	OBC	Open
1.	MSBTE Marks Sheet	✓	✓	✓	✓	✓	✓
2.	Provisional Passing Certificate	✓	✓	✓	✓	✓	✓
3.	10 th Marks Sheet & Passing Certificate	✓	✓	✓	✓	✓	✓
4.	12th Marks Sheet (if applicable)	✓	✓	✓	✓	✓	✓
5.	Leaving Certificate	✓	✓	✓	✓	✓	✓
6.	Domicile & Nationality	✓	✓	✓	✓	✓	✓
7.	Caste Certificate	✓	✓	✓	✓	✓	N/A
8.	Caste Validity	✓	✓	✓	✓	✓	N/A
9.	Non Creamy Layer	N/A	N/A	✓	✓	✓	N/A
10.	Colour Photo - 2	✓	✓	✓	✓	✓	✓
11.	Nationalized Bank Passbook Xerox	✓	✓	✓	✓	✓	✓
12.	Aadhar Card Xerox	✓	✓	✓	✓	✓	✓

खालील शहर व ग्रामीण भागातील विद्यार्थ्यांसाठी कॉलेजची बस सुविधा

- PHULEWADI
- BAPURAM NAGAR
- SALWAN-TISANGI
- WARANA-KODOLI
- HOCKEY STADIUM
- KALAMBA - ITI
- BAWADA-VADANGE
- KANDUR-SARUD
- SANGRUL
- HERLE-KAWALA NAKA
- KHOCHI
- NANDGAON
- KUMBHOJ-NARANDE
- MALKAPUR-BAMBWADE