

	Holy-wood Academy, Kolhapur's SANJEEVAN ENGINEERING AND TECHNOLOGY INSTITUTE Sanjeevan Knowledge City, Somwar Peth- Injole, Panhala, Tal. Panhala, Dist. Kolhapur Pin- 416 201 (MS.) Phone : Dept.: 0231 - 2686613, PBX : 0231 - 2686600, Fax : 0231 - 2686629
■ Approved By AICTE - New Delhi ■ Recognized by Govt. of Maharashtra & DTE ■ Affiliated to Shivaji University, Kolhapur	
Website : www.seti.edu.in Email : principal@seti.edu.in / office@seti.edu.in	
EN 6315	

4.1.1 Departmental plans (drawing) signed by civil Eng. Holy-wood academy, details of physical Infrastructure facilities signed by Principal and HOD, Laboratory

1.	Instructional area: carpet area in square m	
	Class Rooms	2441.52
	Tutorial Rooms	459.52
	Tutorial Rooms (PG)	--
	Laboratories	5226.69
	Laboratories (PG)	175.69
	Research Laboratory (PG)	--
	Drawing hall	257.03
	Workshop and its sections	707.78
	Seminar Hall (UG & PG)	426.20
	Computer Centre	150.00
2.	Administrative area: carpet area in square m	
	Principal/Director Office	40.38
	Chairman office	56.74
	Joint Secretary office	34.45
	Board Room	54.83
	Office all inclusive	150.50
	Department Offices	164.69
	Cabins for Head of	60.00
	Faculty Area	52.46
	Examinations Control Office	34.92
	Placement Office	40.89
	Central Stores	44.85
	Maintenance	15.00
	Security	15.00
	House Keeping	15.00
	Pantry for staff	15.63

3.	Amenities Area (Carpet Area) in Sqm	
	Toilets (Ladies & Gents)	687.82
	Girls Common Room	90.14
	Boys Common Room	68.25
	Cafeteria	220.80
	Stationery Stores & Reprography	19.82
	First Aid Cum Sick Room	25.15
4.	Library facility:	
	Total area of the library	577.09
	Seating capacity of the library	110.00
	Reprographic facility	38.89
	Working hours of Library (Extended time during Exams)	8:30 am to 6:00 pm
	Library networking facility	40 Nodes connected through CAT 6 in LAN
	Usage data of the library (in terms of books issued to the faculty & students etc.)	100 Per Day
5.	Details of Computer Facilities:	
	Branch wise and Lib+Office+Staff+Hostel+WS	<p>Total 663 Computers having Configuration</p> <ul style="list-style-type: none"> • i3, 500GB, 4GB • c2d, 500GB, 4GB • c2d, 320GB, 4GB • dual Core, 500GB, 4GB
6.	Internet Facility Details:	
		<ul style="list-style-type: none"> • BSNL Leased Line 1:1 20Mbps • PRI Line (Broadband) 10 Mbps • Firewall Cyberoam 50ing



Holy-wood Academy, Kolhapur's
SANJEEVAN ENGINEERING AND TECHNOLOGY INSTITUTE

Sanjeevan Knowledge City, Somwar Peth- Injole, Panhala, Tal. Panhala, Dist. Kolhapur Pin- 416 201 (MS.)
Phone : Dept.: 0231 - 2686613, PBX : 0231 - 2686600, Fax : 0231 - 2686629

■ Approved By AICTE - New Delhi ■ Recognized by Govt. of Maharashtra & DTE ■ Affiliated to Shivaji University, Kolhapur

Website : www.seti.edu.in Email : principal@seti.edu.in / office@seti.edu.in

EN 6315

DEPARTMENT OF CIVIL ENGINEERING

4.4.1 Name of Department: **DEPARTMENT OF CIVIL ENGINEERING**

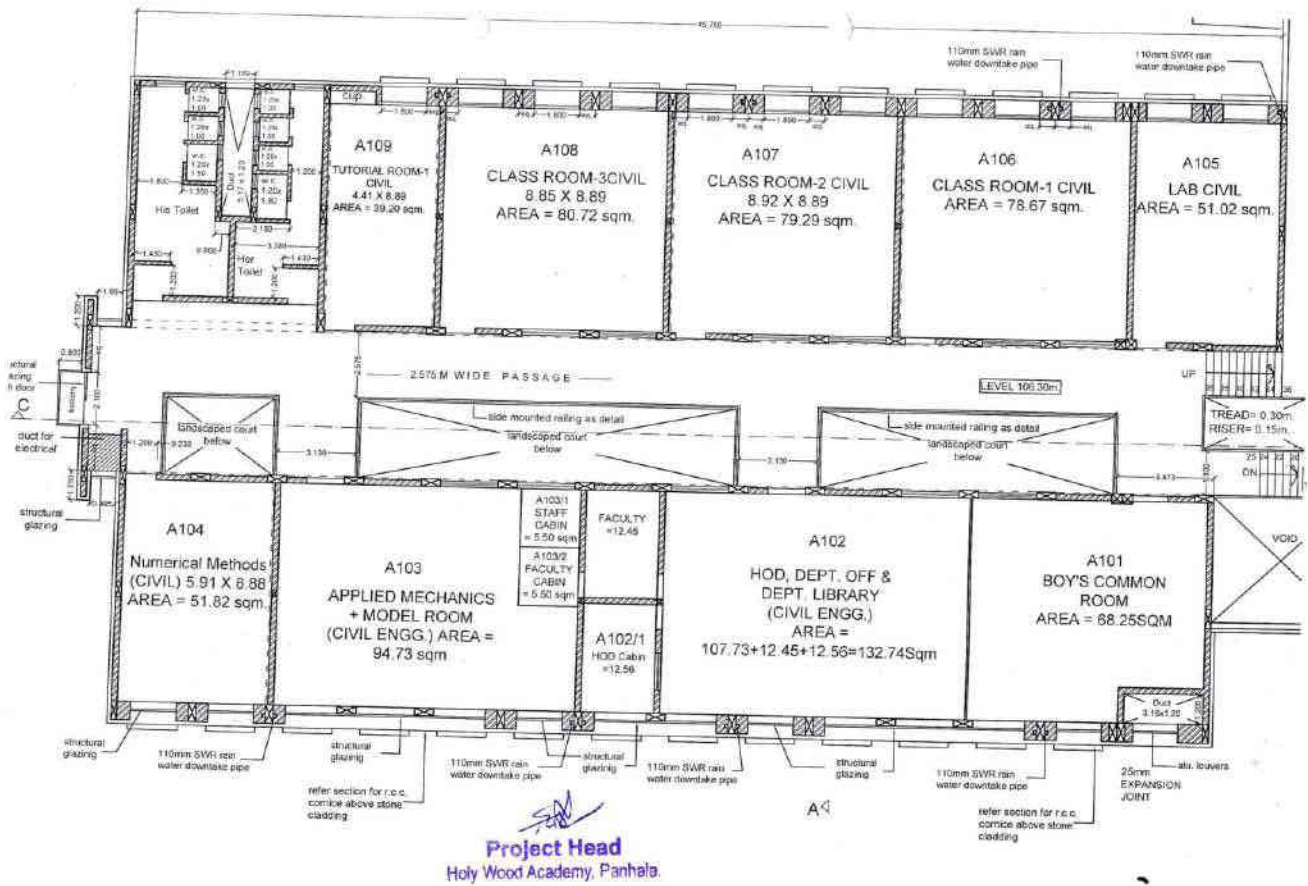
Space Description	Facility available	Details	
		Number	Average Size (m ²)
Class Rooms	Class Rooms	03	80.72
Technology enabled Learning Spaces	Engineering Drawing Room	01	132.74
Reading Rooms	Central Library	-	-
	Departmental Library	01	30.00
	Digital Library	-	-
Seminar Hall	Seminar Hall	01	133.44 (Shared with Department of Electrical)
Tutorial Rooms	Tutorial Rooms	01	39.20
Gymnasium	Gymnasium	NA	
Well-equipped laboratories	Department Laboratories	10	72.89
Botanical Garden	Botanical Garden	NA	
Specialized facilities and equipment for teaching-learning	LCD Projectors	03	-
	State of art Language lab (Only FE.)	-	
	Wi-Fi	01	-
Central Workshop	Machine Shop, Carpentry Shop, Smithy Shop, Welding Shop, Sheet metal & Tin smithy shop, CNC Machine Shop	-	-
Faculty Cubicles	Faculty Cubicles	14	5.50
Parking	Two Wheeler Parking	NA	
	Four Wheeler Parking	NA	
Animal house	Horse stable	NA	
Specialized facilities and equipment for research	PG Laboratories	--	

HOD

Civil Engineering
Sanjeevan Engineering & Technology Institute
Somwar Peth, Panhala, Dist. Kolhapur. (416 201)

PRINCIPAL

Sanjeevan Engg. & Tech. Institute
Somwar Peth, Panhala, Dist. Kolhapur. (MS)



DEPARTMENT OF CIVIL ENGINEERING FLOOR PLAN



Holy-wood Academy, Kolhapur's
SANJEEVAN ENGINEERING AND TECHNOLOGY INSTITUTE

Sanjeevan Knowledge City, Somwar Path- Injole, Panhala, Tal. Panhala, Dist. Kolhapur Pin- 416 201 (MS.)
 Phone : Dept.: 0231 - 2686613, PBX : 0231 - 2686600, Fax : 0231 - 2686629

* Approved By AICTE - New Delhi * Recognized by Govt. of Maharashtra & DTE * Affiliated to Shivaji University, Kolhapur

Website : www.seti.edu.in Email : principal@seti.edu.in / office@seti.edu.in

EN 6315

Department of Automobile Engineering

Space Description	Facility available	Details	
		Number	Average Size (m2)
Class Rooms	Class Rooms	3	88.65
Technology enabled Learning Spaces	Engineering Drawing Room	1	64.8
Reading Rooms	Central Library	1	—
	Departmental Library	1	50
	Digital Library	1	27
Seminar Hall	Seminar Hall	1	132.83
Tutorial Rooms	Tutorial Rooms	1	69.22
Gymnasium	Gymnasium	NA	NA
Well-equipped laboratories	Department Laboratories	10	87.091
Botanical Garden	Botanical Garden	NA	NA
Specialized facilities and	LCD Projectors	---	---
	State of art Language lab (Only FE.)	---	---
	Wi-Fi	---	---
Central Workshop	Machine Shop, Carpentry Shop, Smithy	1	144.53
Faculty Cubicles	Faculty Cubicles	1	5.5
Parking	Two Wheeler Parking	NA	NA
	Four Wheeler Parking	NA	NA
Animal house	Horse stable	NA	NA
Specialized facilities and	PG Laboratories	NIL	NIL

4.4.1 Name of Department: DEPARTMENT OF AUTOMOBILE ENGINEERING

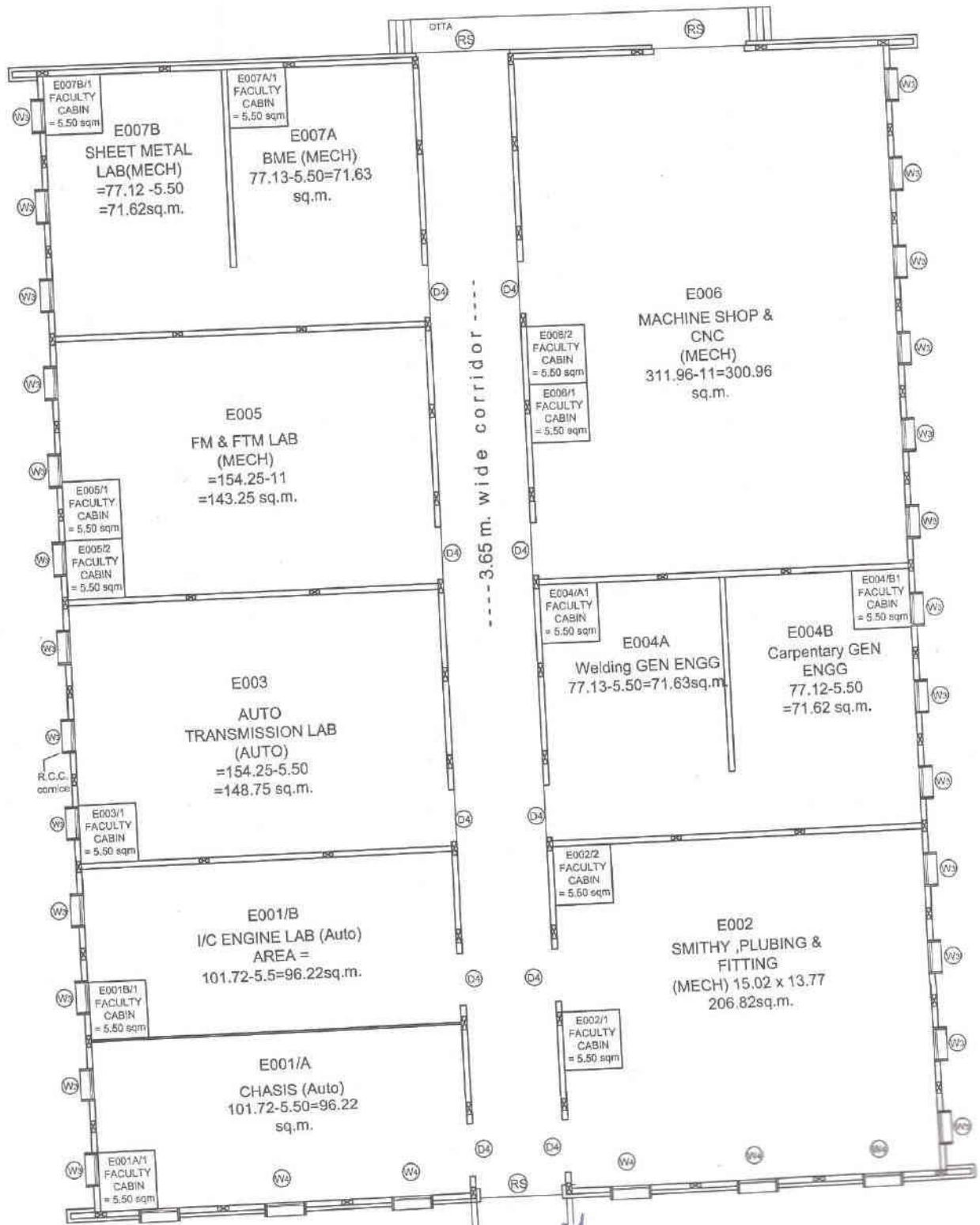
Gota
 HEAD,

AUTOMOBILE ENGINEERING
 HEAD, DEPARTMENT OF
 AUTOMOBILE ENGINEERING
 Sanjeevan Engg. & Tech. Institute
 Somwar Path, Panhala - 416 201

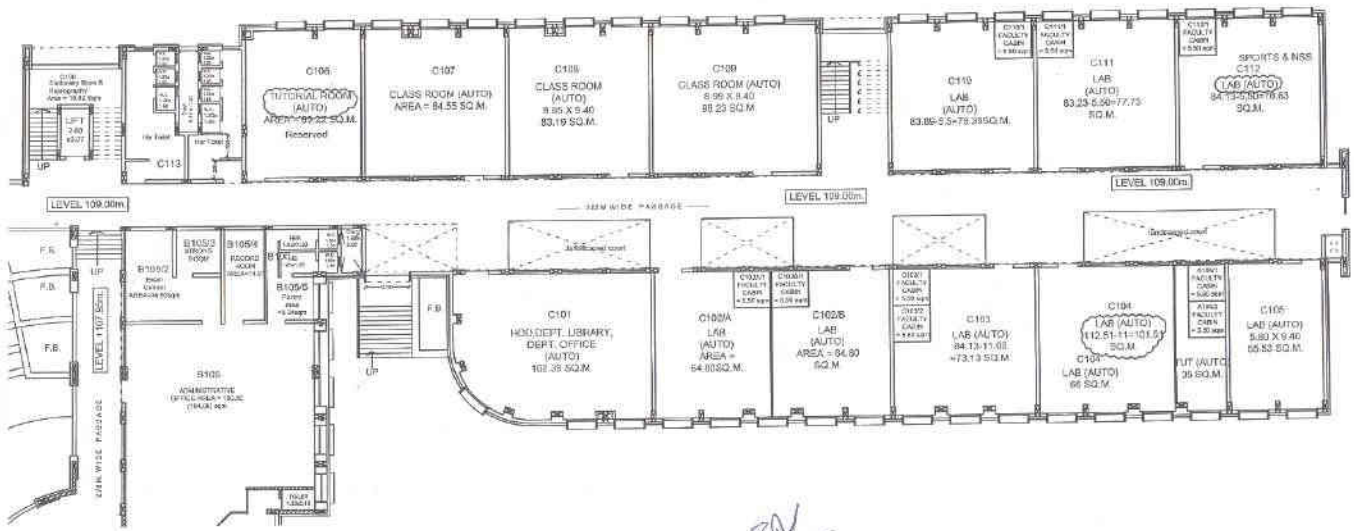


Chavale

PRINCIPAL
 PRINCIPAL
 Sanjeevan Engg. & Tech. Institute
 Somwar Path, Panhala, Dist. Kolhapur. (MS)



Project Head
 Univ Wood, Dapaha




Project Head
 Holy Wood Academy, Panhala.

DEPARTMENT OF AUTOMOBILE ENGINEERING FLOOR PLAN

4.4.1 Basic science & Humanities

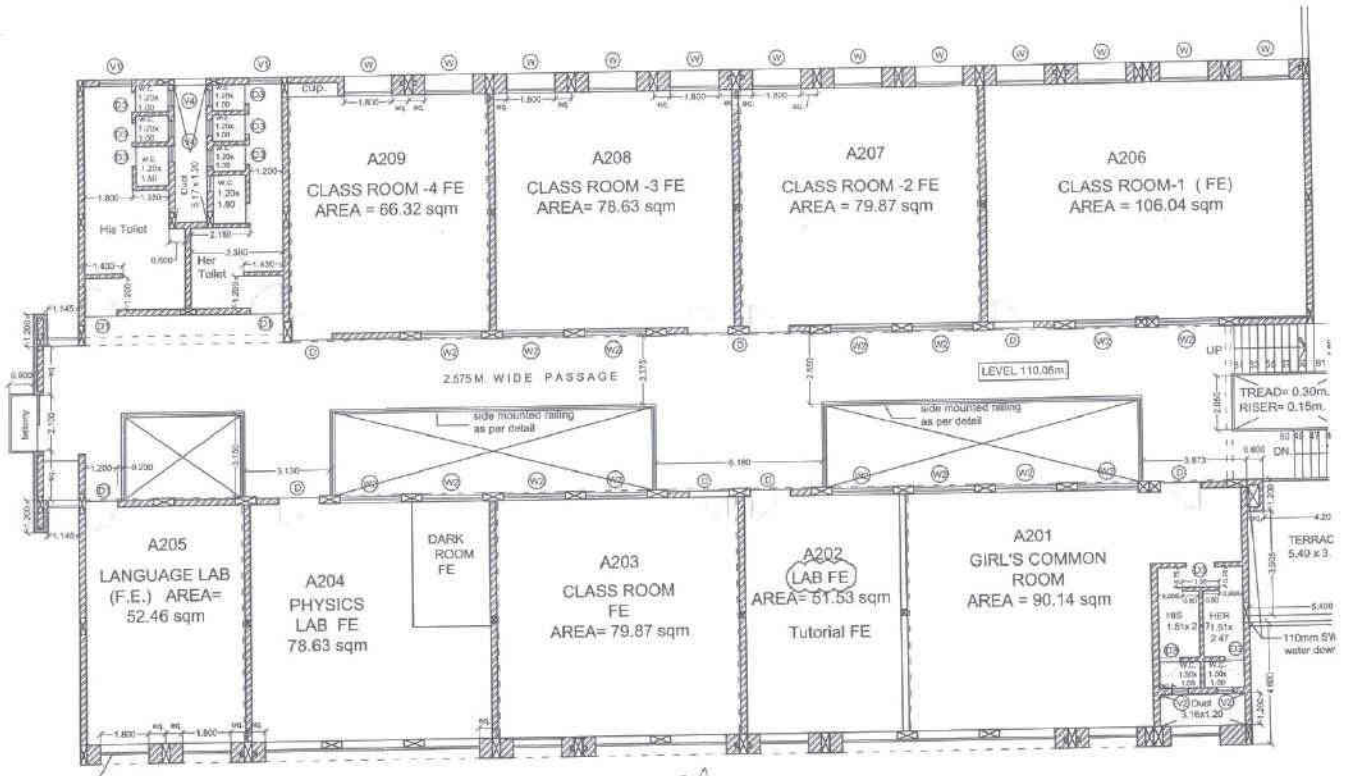
Space Description	Facility available	Details	
		Number	Average Size (m ²)
Class Rooms	Class Rooms	05	82.14sq.m.
Technology enabled Learning Spaces	Engineering Drawing Room	01	257.03sq.m.
Reading Rooms	Central Library	01	577sq.m.
	Departmental Library	01	30sq.m.
	Digital Library	01	70sq.m.
Seminar Hall	Seminar Hall	NA	
Tutorial Rooms	Tutorial Rooms	01	51.53sq.m.
Gymnasium	Gymnasium	NA	
Well-equipped laboratories	Department Laboratories	03	71.57 sq.m.
Botanical Garden	Botanical Garden	NA	
Specialized facilities and equipment for teaching-learning	LCD Projectors	01	
	State of art Language lab (Only FE.)	01	52.46sq.m
	Wi-Fi	01	
Central Workshop	Machine Shop, Carpentry Shop, Smithy Shop, Welding Shop, Sheet metal & Tin smithy shop, CNC Machine Shop	03	250sq.m.
Faculty Cubicles	Faculty Cubicles	05	5.5sq.m.
Parking	Two Wheeler Parking	NA	
	Four Wheeler Parking	NA	
Animal house	Horse stable	NA	
Specialized facilities and equipment for research	PG Laboratories	NA	


DR.V A. Patil

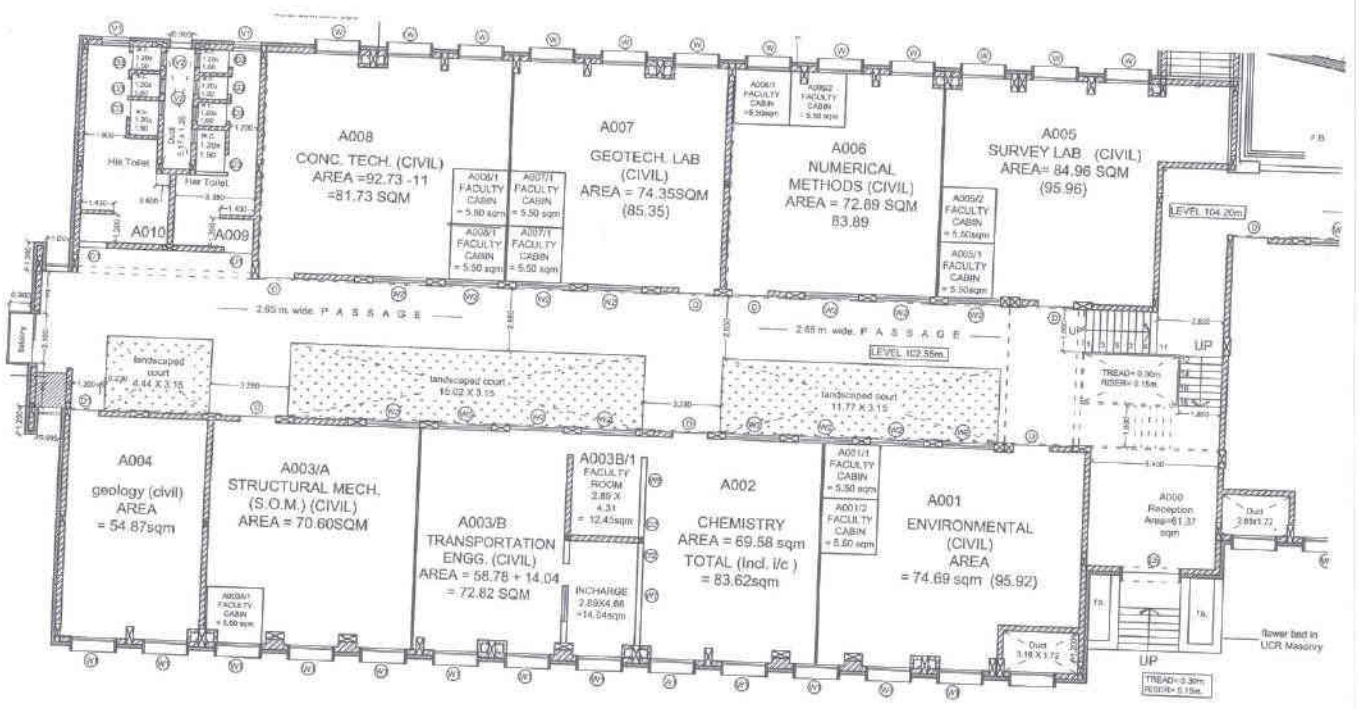
H. O. D.
General Engineering


Principal

PRINCIPAL
Sanjeevan Engg. & Tech. Institute
Somwar Peth, Panhala, Dist. Kolhapur, (MS)



Project Head
Holy Wood Academy, Panhala.



Project Head
Holy Wood Academy, Panhala.

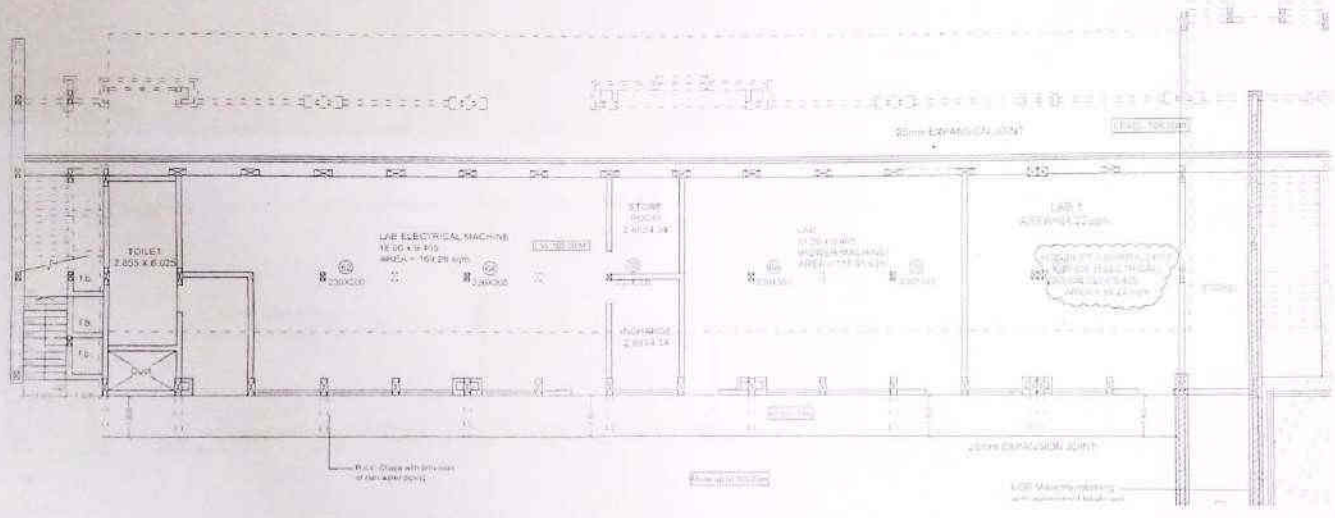
4.4.1 Name of Department: Electrical Engineering

Space Description	Facility available	Details	
		Number	Average Size (m ²)
Class Rooms	Class Rooms	3	78.58
Technology enabled Learning Spaces	Engineering Drawing Room	Nil	Nil
Reading Rooms	Central Library	NA	NA
	Departmental Library	1	32.28
	Digital Library	NA	NA
Seminar Hall	Seminar Hall	1	133.44
Tutorial Rooms	Tutorial Rooms	1	51.53
Gymnasium	Gymnasium	NA	NA
Well-equipped laboratories	Department Laboratories	10	89.14
Botanical Garden	Botanical Garden	NA	NA
Specialized facilities and equipment for teaching-learning	LCD Projectors	03 (Projectors)	NA
	State of art Language lab (Only FE.)	NA	NA
	Wi-Fi	Nil	Nil
Central Workshop	Machine Shop, Carpentry Shop, Smithy Shop, Welding Shop, Sheet metal & Tin smithy shop, CNC Machine Shop	1 (Dept. Electrical Workshop)	78.94
Faculty Cubicles	Faculty Cubicles	10	12.54
Parking	Two Wheeler Parking	NA	NA
	Four Wheeler Parking	NA	NA
Animal house	Horse stable	NA	NA
Specialized facilities and equipment for research	PG Laboratories	NA	NA
Department Office	HOD Cabin (12.54), Meeting Room (32.28), Dept. Library (32.28)	1	79.25


 (Head Electrical Engineering Dept.)
 SANJEEVAN ENGINEERING AND
 TECHNOLOGY INSTITUTE, PANHALA
 Somwar Peth, Tal. Panhala, Dist. Kolhapur-416 201
 MAHARASHTRA, INDIA

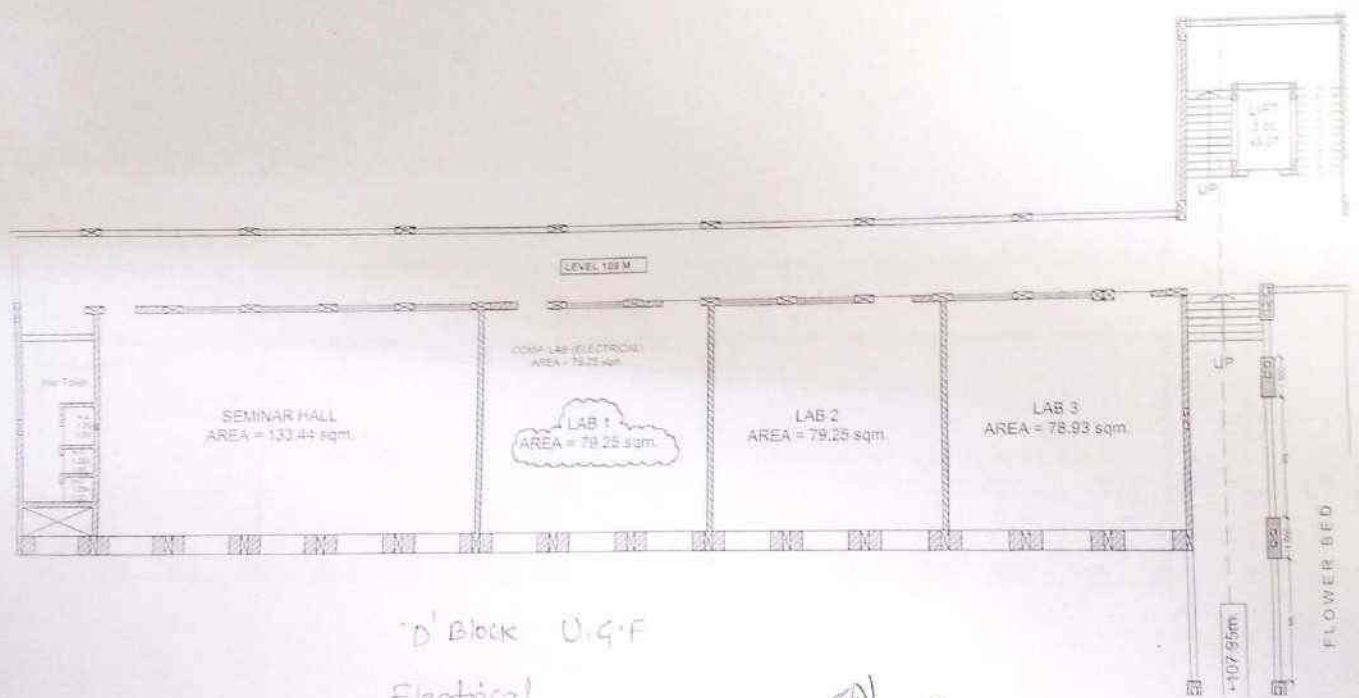

 PRINCIPAL
 Sanjeevan Engg. & Tech. Institute
 Somwar Peth, Panhala, Dist. Kolhapur. (MS)

14/06/14



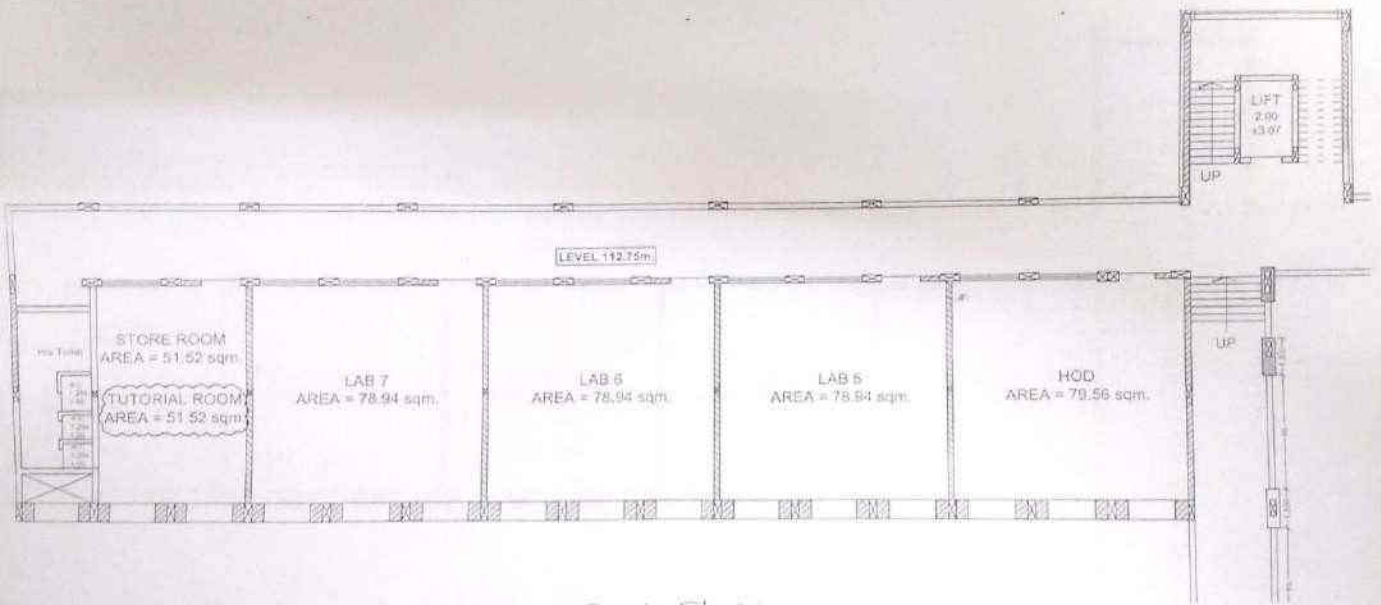
D'Block L.G.F.
Electrical Engg


Project Head
Holy Wood Academy, Panhala.



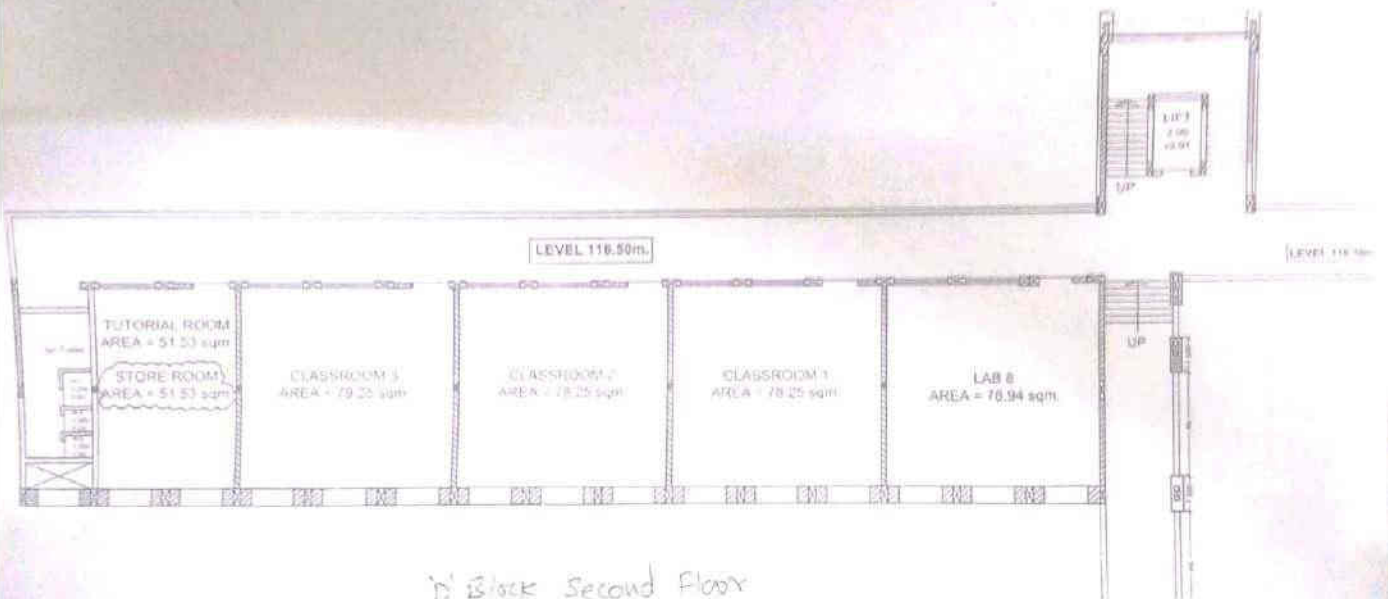
D'Block U.G.F.
Electrical


Project Head
Holy Wood Academy, Panhala.



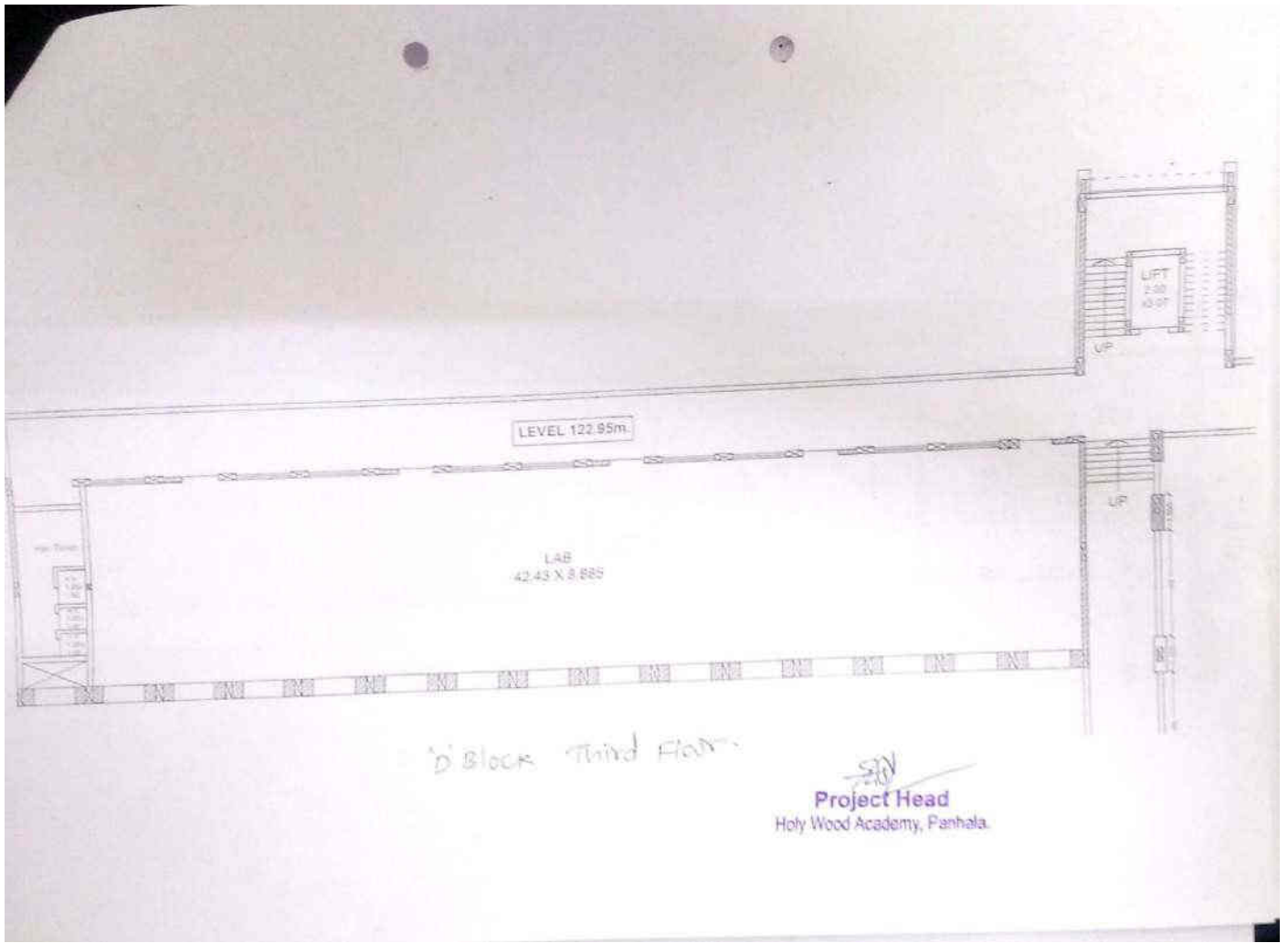
D'Block First Floor
Electrical

Project Head
Holy Wood Academy, Panhala.



D'Block Second Floor
Electrical

Project Head
Holy Wood Academy, Panhala.



DEPARTMENT OF ELECTRICAL ENGINEERING FLOOR PLAN



Holy-wood Academy, Kolhapur's
SANJEEVAN ENGINEERING AND TECHNOLOGY INSTITUTE

Sanjeevan Knowledge City, Somwar Peth- Injole, Panhala, Tal. Panhala, Dist. Kolhapur- 416 201

Phone : 0231 - 2686600 Fax : 0231 - 2686642

■ Approved By AICTE - New Delhi ■ Recognized by Govt. of Maharashtra & DTE ■ Affiliated to Shivaji University, Kolhapur

COMPUTER SCIENCE & ENGINEERING

EN 6315

4.4.1 Average expenditure incurred on maintenance of physical facilities and academic support facilities excluding salary component, as a percentage during the last five years (10)

4.4.1 Name of Department: Computer Science & Engineering

Space Description	Facility available	Details	
		Number	Average Size (m2)
Class Rooms	Class Rooms	3	80 sq.m.
Technology enabled Learning Spaces	Engineering Drawing Room	NA	--
Reading Rooms	Central Library	1	577.09sq.m.
	Departmental Library	01	30 sq.m.
	Digital Library	1	68.78sq.m.
Seminar Hall	Seminar Hall	1	174.69sq.m.
Tutorial Rooms	Tutorial Rooms	2	41.62sq.m.
Gymnasium	Gymnasium	NA	--
Well-equipped laboratories	Department Laboratories	8	80sq.m.
Botanical Garden	Botanical Garden	NA	--
Specialized facilities and equipment for teaching-learning	LCD Projectors	4	--
	State of art Language lab (Only FE.)	NA	--
	Wi-Fi	0	--
Central Workshop	Machine Shop, Carpentry Shop, Smithy Shop, Welding Shop, Sheet metal & Tin smithy shop, CNC Machine Shop	NA	--
Faculty Cubicles	Faculty Cubicles	10	5.5sq.m.
Parking	Two Wheeler Parking	NA	--
	Four Wheeler Parking	NA	--
Animal house	Horse stable	NA	--
Specialized facilities and equipment for research	PG Laboratories	NA	--

H. G. ...
 Sanjeevan Engineering & Technology Institute
 Somwar Peth, Panhala, Dist. Kolhapur (416 201)

S. ...
PRINCIPAL
 Sanjeevan Engg. & Tech. Institute
 Somwar Peth, Panhala, Dist. Kolhapur. (MS)

4.4.1 Average expenditure incurred on maintenance of physical facilities and academic support facilities excluding salary component, as a percentage during the last five years (10)

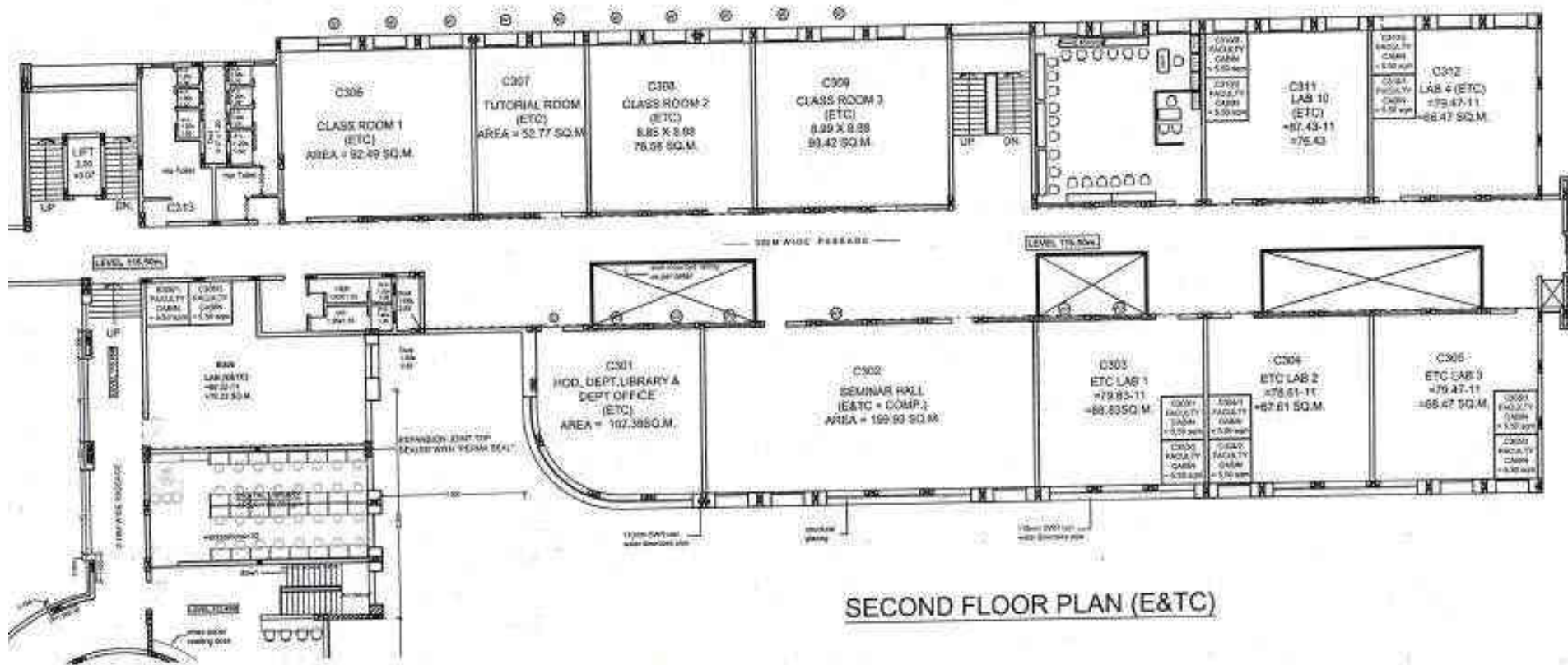
Space Description	Facility Available	Details	
		Number	Average Size (SQM)
Class Rooms	Class Rooms	3	81
Technology enabled Learning Spaces	Engineering Drawing Room	NA	NA
Reading Rooms	Central Library	1	617
	Departmental Library	1	20.63
	Digital Library	Not Available	Not Available
Seminar Hall	Seminar Hall	1	174.69
Tutorial Rooms	Tutorial Rooms	Not Available	Not Available
Gymnasium	Gymnasium	NA	NA
Well-equipped Laboratories	Department Laboratories	9	81.01
Botanical Garden	Botanical Garden	NA	NA
Specialized Facilities & Equipment for Teaching-Learning	LCD Projectors	2	
	State of Art Language Lab (Only FE)	NA	NA
	Wi-fi	Not Available	Not Available
Central Workshop	Machine, Carpentry, Smithy, Welding, Sheet Metal & Tin Smithy, CNC Machine Shop	NA	NA
Faculty Cubicles	Faculty Cubicles	Not Available	Not Available
Parking	Two Wheeler Parking	NA	NA
	Four Wheeler Parking	NA	NA
Animal House	Horse Stable	NA	NA
Specialized Facilities & Equipment for Research	PG Laboratories	1	66.35


HOD

Electronics & Telecommunication Engg.
 Sanjeevan Engineering & Technology Institute
 Somwar Peth, Panhala, Dist. Kolhapur. (416 201)


प्रभार

संजीवन इंजि. अँड टेक्नॉलॉजी इंस्टीट्यूट,
 सोमवार पेट, ४१६२०१.



SECOND FLOOR PLAN (E&TC)


Project Head
 Holy Wood Academy, Panhala

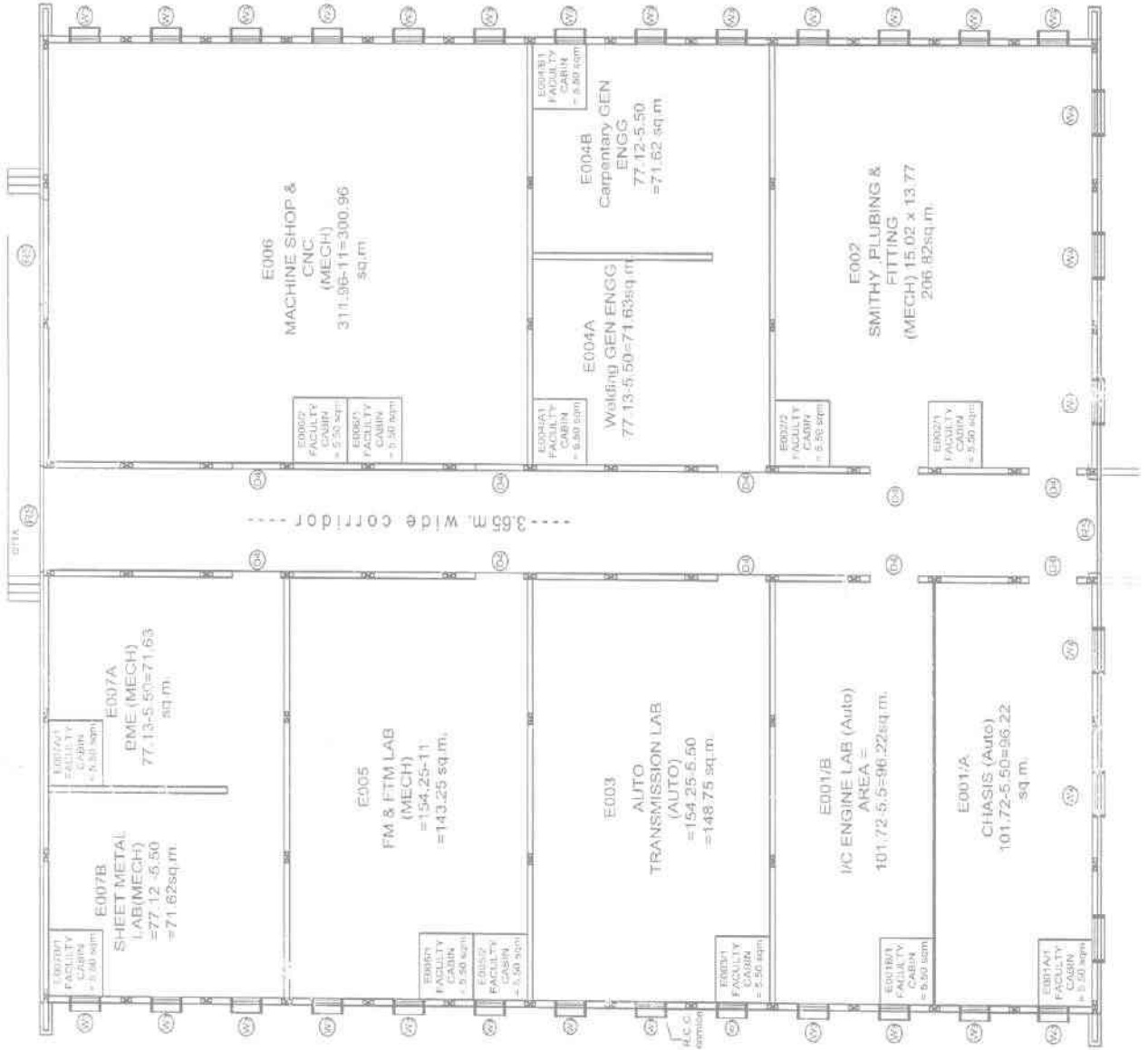
DEPARTMENT OF ELECTRONICS AND TELECOMMUNICATIONS ENGINEERING FLOOR PLAN

4.4.1 Average expenditure incurred on maintenance of physical facilities and academic support facilities excluding salary component, as a percentage during the last five years (10)

Space Description	Facility Available	Details	
		Number	Average Size (SQM)
Class Rooms	Class Rooms	4	75.94
Technology enabled Learning Spaces	Engineering Drawing Room	1	107.5
Reading Rooms	Central Library	1	617
	Departmental Library	1	15.5
	Digital Library	Not Available	Not Available
Seminar Hall	Seminar Hall	1	132.83
Tutorial Rooms	Tutorial Rooms	1	52.17
Gymnasium	Gymnasium	NA	NA
Well-equipped Laboratories	Department Laboratories	16	74.35
Botanical Garden	Botanical Garden	NA	NA
Specialized Facilities & Equipment for Teaching-Learning	LCD Projectors	3	
	State of Art Language Lab (Only FE)	NA	NA
	Wi-fi	1	
Central Workshop	Machine, Carpentry, Smithy, Welding, Sheet Metal & Tin Smithy, CNC Machine Shop	1 each	180.66
Faculty Cubicles	Faculty Cubicles	Not Available	Not Available
Parking	Two Wheeler Parking	Nil	NA
	Four Wheeler Parking	Nil	NA
Animal House	Horse Stable	Nil	NA
Specialized Facilities & Equipment for Research	PG Laboratories	2	57.78

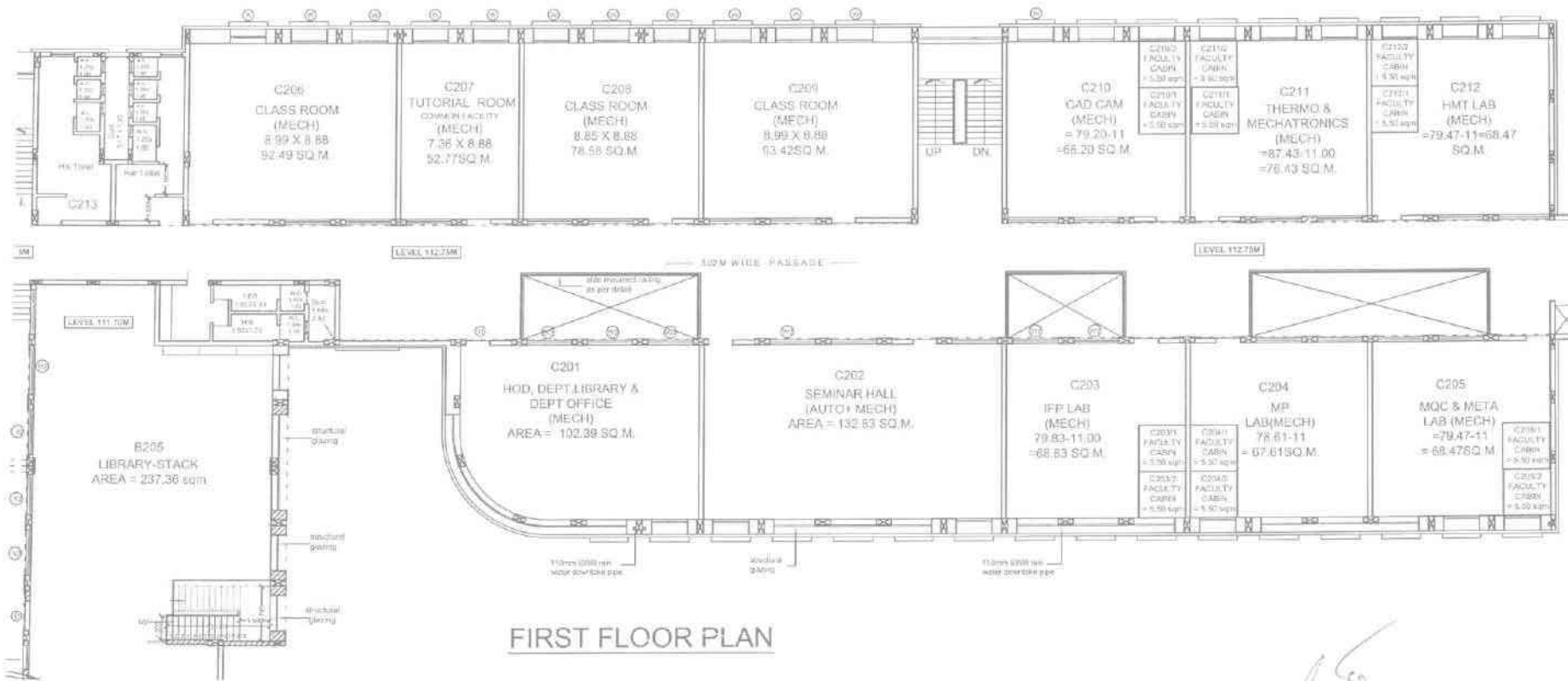
S. P. Patil
HOD
Mechanical Engineering
 Sanjeevan Engg. & Tech. Institute
 Somwar Peth, Panhala, Dist. Kolhapur.

S. P. Patil
PRINCIPAL
 Sanjeevan Engg. & Tech. Institute
 Somwar Peth, Panhala, Dist. Kolhapur. (MS)




Project Head
 Holy Wood Academy, Panhala.

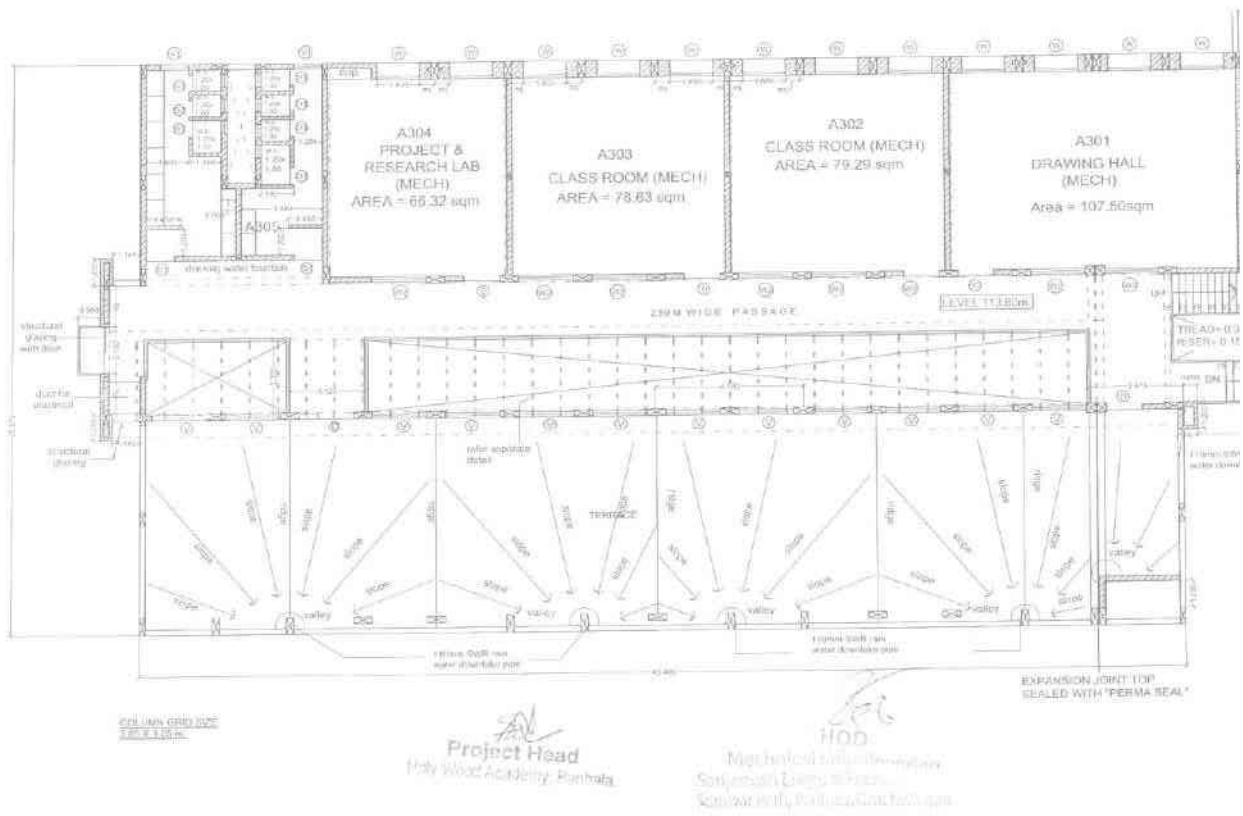

HOD
 Mechanical Engineering
 Sanjeevan Engg. & Tech. Inst. 19
 Somwar Peth, Panhala, Dist. Kolhapur.



FIRST FLOOR PLAN

Project Head
 Holy Wood Academy, Panhala

Sanjeevan
HOD
 Mechanical Engineer
 Sanjeevan Engg. & Tech. Int.
 Somwar Path, Panhala, Dist. Kolhapur.



DEPARTMENT OF MECHANICAL ENGINEERING FLOOR PLAN